

Ex-O-Flow

Exit Lane Breach Control



Ex-O-Flow Aviation Security

www.recorddoors.com



record

your global partner for entrance solutions

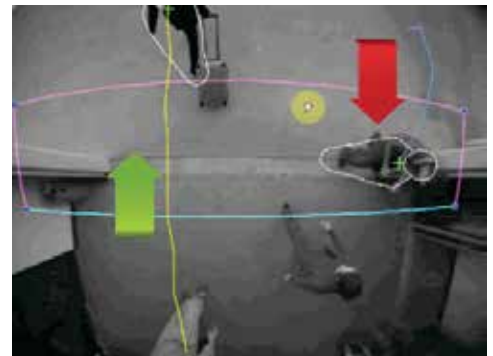
Monitor Airport Terminal Exit Lanes and Detect and Report Wrong Way Traffic

The Ex-O-Flow One-Way Traffic Sensor is designed to detect and report the movement of persons the wrong way through a secured area. By utilizing its unique "virtual 3-D" Technology, the Ex-O-Flow can be used to improve security in areas where reverse traffic is not allowed. The most common application for this technology is exit lanes in Airport Terminals. When Ex-O-Flow is used in this application, it will immediately report any movement against the approved flow of traffic. Although not designed to work stand-alone, the output from the Ex-O-Flow can be used to call a guard, close automated gates or doors and activate CCTV.

Item	Specification		
Flush Mount Kit	Ex-O-FlowFMK (includes on Ex-O-FlowCB Control Box and one Ex-O-FlowF Flush Mount Detector)		
Surface Mount Kit	Ex-O-FlowSMK (includes on Ex-O-FlowCB Control Box and one Ex-O-FlowS Surface Mount Detector)		
Detection Method	Vector Focusing Method		
Supply Voltage	>95% (by own criteria)		
Power Consumption	DC12~24V		
Indicator	Control Box	Power (orange) Authorization (Green) Normal entry (Green)/Tailgating (Red)/ Multiple detection (Blinking Red)	
	Detection unit		
Dimensions	Ex-O-FlowCB Control box	8.94 (W) 6.47(H) 2.62(D) in	
	Ex-O-FlowF Sensor (Flush Mount)	Ø3.54 in	
	Ex-O-Flow5 Sensor (Surface)	3.62 (W) 2.56(H) 1.73(D) in	
Weight	Ex-O-FlowCB Control Box	1.98 lb	
	Ex-O-FlowF Sensor (Flush Mount)	.66 lb	
	Ex-O-Flow5 SENSOR (Surface)	.60 lb	
Operating Temperature	14° F to 122° F		
Operating Humidity	< 90%		
Operating Illuminance	100lx~20,000lx		
Install Location	Ex-O-FlowCB Control Box	Hang up wall/stationary	
	Detection Unit	In the non-secured area	
Mounting Height	7.87 ft to 13 ft		
Detection Area	Setting by the setting software		
Others	Entry Number Input Keypad		
	PC Connection for area setting		
	Extended Communication	RS-232C	D-Sub9Pin

Features:

- **Highly Accurate Detection** The Ex-O-Flow uses Patented "Virtual 3-D" technology to track persons within its field of view.
- This technology guaranteed higher than 95% accuracy for detection of persons and object within its field within its field of view.
- **Wrong Way Tracking** Can track a high volume of targets simultaneously and ignore all motion in the proper direction.



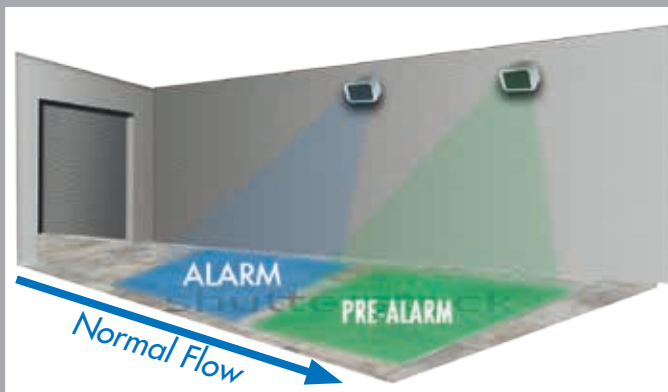
- However, if a person attempts to move the wrong way through the coverage area, the Ex-O-Flow immediately detects the movement and creates an output.
- **Self-Contained** The Ex-O-Flow does not require a separate computer. All processing is built into its controller which is normally mounted near the camera.
- A separate PC or Laptop can be used for set-up and adjustment but is not require for normal operation.
- **Inconspicuous** The Ex-O-Flow Camera module is very small and inconspicuous
- A flush mount version of the camera is also available
- **Warning and Alarm Zone** When (2) sensors are used together, an early warning zone can be created that warns intruders and instructs them to retreat.
- If they continue, the alarm zone will activate causing additional deterrent measures.



OPTION 1

SINGLE SENSOR NO BARRIER

Relay Output to
 1) Audible/Visual Alarm
 2) CCTV
 (Manual Reset)



OPTION 2

DUAL SENSOR NO BARRIER

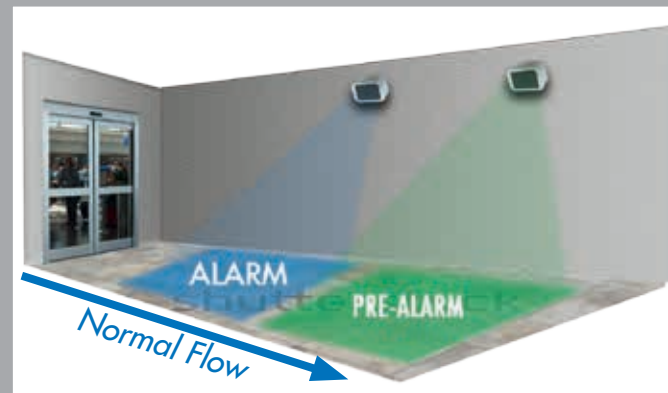
Relay of Pre-Alarm
 1) Activate Verbal Warning
 (Auto Reset)
 Relay of Alarm
 1) Audible/Visual Alarm
 2) CCTV
 (Manual Reset)



OPTION 3

SINGLE SENSOR WITH BARRIER

Relay Output to
 1) Audible/Visual Alarm
 2) CCTV
 3) Auto Door Lock



OPTION 4

DUAL SENSOR WITH BARRIER

Relay Pre-Alarm
 1) Activate Verbal Warning
 (Auto-Reset)
 Relay of Alarm
 1) Audible/Visual Alarm
 2) CCTV
 3) Auto Door Lock
 (Manual Reset)

Contact

→ record automatic door systems

4324 Phil Hargett Court – Post Office Box 3099 – Monroe, NC 28110

tel. +1 800 438-1937 – e-mail: info@recorddoors.com – www.recorddoors.com

→ Headquarters

agta record ltd – Allmendstrasse 24 – 8320 Fehraltorf – Switzerland

tel.: +41 44 954 91 91 – e-mail: info@agta-record.com – www.agta-record.com



www.recorddoors.com



record

your global partner for entrance solutions