



**EXPLODED VIEWS & PARTS
PARTS LIST
EVPL-07**

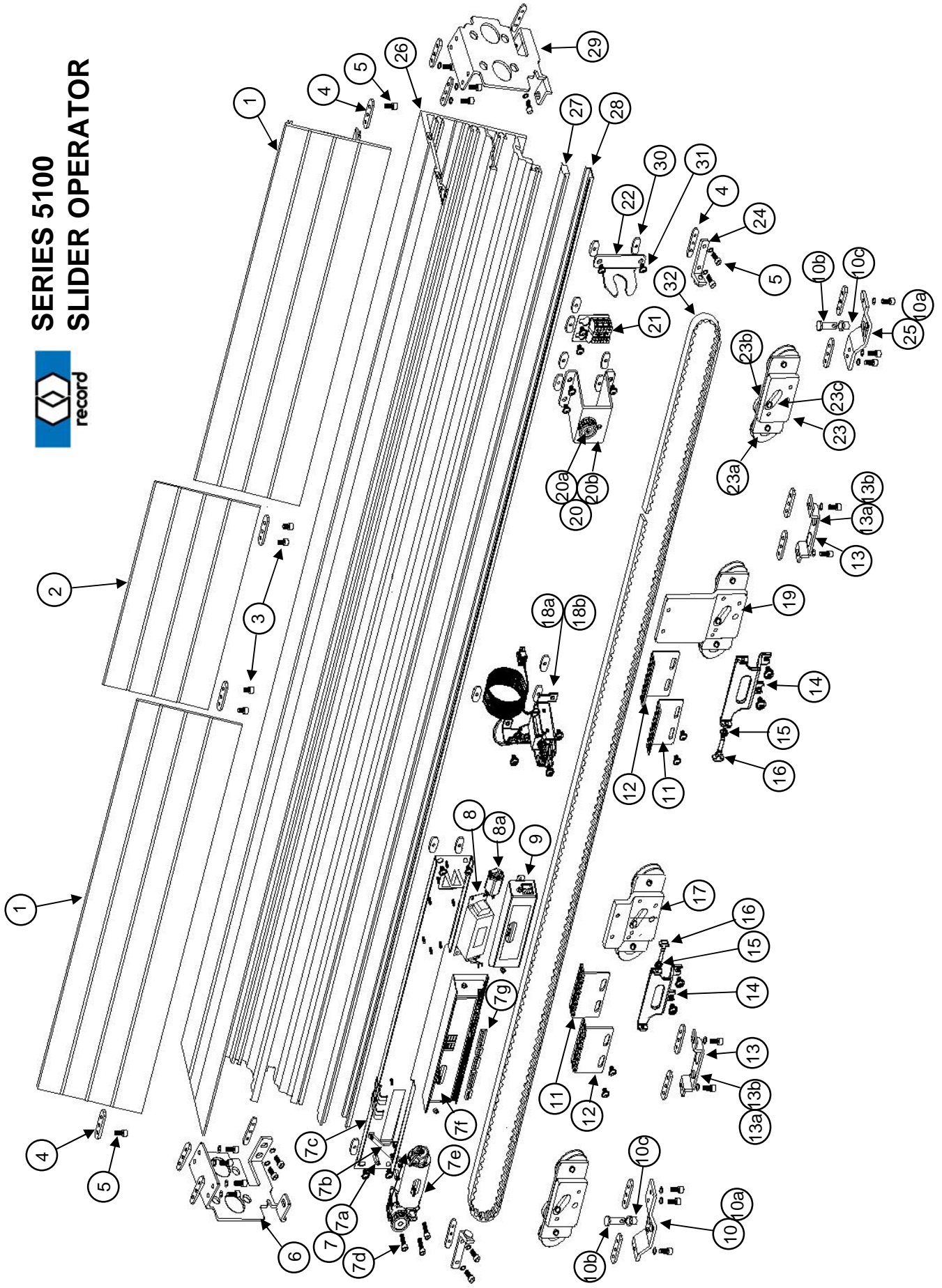
Effective September 1, 2007



INDEX

5100 SLIDER HEADER EXPLODED VIEW~	1
5100 SLIDER HEADER ASSEMBLY PARTS~	2
5100 SLIDING DOOR EXPLODED VIEW~	3
5100 SLIDING DOOR PARTS LIST~	4
5100 "SO" PANEL EXPLODED VIEW~	5
5100 "SO" PANEL PARTS LIST~	6
5100 "O" PANEL EXPLODED VIEW~	7
5100 "O" PANEL PARTS LIST~	8
5100 BOTTOM GUIDE ASSEMBLIES~	9
5100 BOTTOM GUIDE PART LIST~	10
5200 BOTTOM GUIDE / THRESHOLD~	11,12
5100 ELECTRIC LOCK KITS~	13
5100 TELESCOPE ELECTRIC LOCK KITS~	14
TRACKLESS ICU VIEW~	15
TRACKLESS ICU PARTS LIST~	16
8100/6100 OPERATOR EXPLODED VIEW~	17
8100/6100 OPERATOR PARTS LIST~	18
8100/6100 ARM ASSEMBLIES~	19
SWITCHES & ACCESSORIES~	20
SWITCHES & ACCESSORIES~	21

SERIES 5100 SLIDER OPERATOR



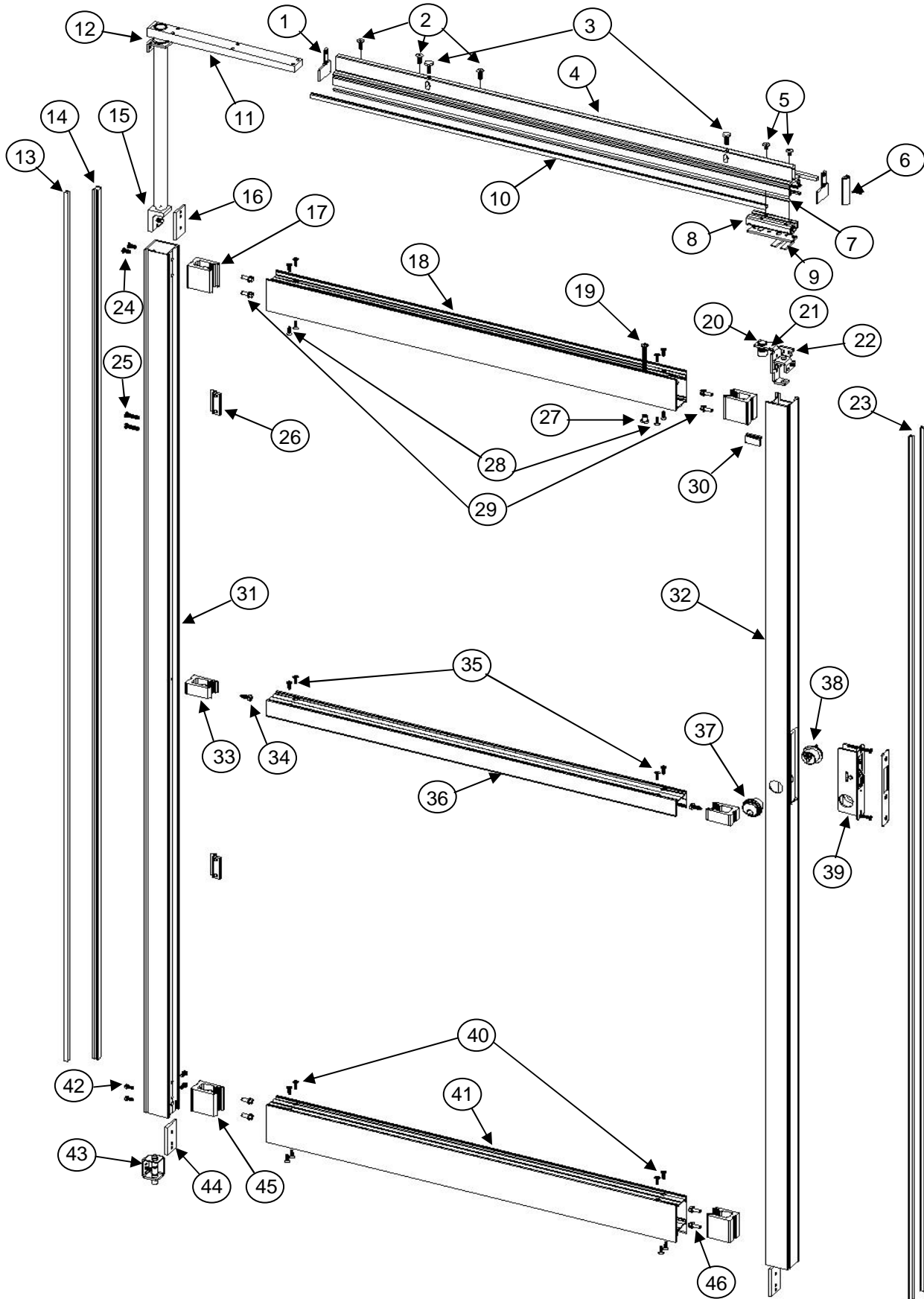


SERIES 5100 HEADER ASSEMBLY PARTS

8-07

ITEM	PART NUMBER	DESCRIPTION	QTY. REQ'D	LIST PRICE
1	5-51-4002	COVER, CL-DB	*	
2	5-51-4002	COVER, CENTER 15"(bipart) CL-DB	1	
3	81-0016-2554	SCREW,10-32X1/4" ALLEN CS BL OXIDE (cntr.cvr.)	4	
4	4-51-1037	NUT PLATE, 10-32 (3 holes)	20 typ.	
5	81-0016-2562	SCREW,10-32X1/2" ALLEN CS BL OXIDE	12 typ.	
6	4-51-1055	BRACKET, HEADER MOUNTING - LH	1	
7	4-51-0100	DRIVE MODULE, SERIES 5100	1	
7a	4-51-1059	THREADED STANDOFF, M5X14	3	
7b	4-51-1057	PLATE, MOTORDRIVE SPACER	1	
7c	4-51-0101	CHASSIS ASSY.,DRIVE MODULE	1	
7d	9-99-1815	SCREW,M5X20 ALLEN CS Zinc(Motor/GB. Mounting)	3	
7e	9-99-2154	MOTORDRIVE ASSY.	1	
7f	9-99-1322	CONTROL ASSY.	1	
7g	9-99-6597	J1 - CANbus, 25-28	1	
	9-99-6600	J2 - Ext.&Aux. Sensors, B/O,C/O, 1-12	1	
	9-99-6598	J3 - Rem. Sensor, Rkr./Key Panel, 13-18	1	
	9-99-6596	J4 - Interior Sensor, 21-23	1	
	9-99-6599	J5 - Safety Beams, 30-37	1	
8	9-99-6813	TRANSFORMER, 115 Volt Primary	1	
8a	9-79-0008	FILTER, Powerline, FUSE,5x20, 2 1/2amp,slow blow	1	
9	4-51-4010	COVER, Power Supply	1	
10	4-51-0007	BRACKET ASSY., UP. SIDELITE PVT. - LH	1	
10a	4-51-1047	BRACKET, UPPER SIDELITE PIVOT	1	
10b	9-58-0008	PIN, CLEVIS, 3/8"x1 1/4"	1	
10c	9-99-0232	BEARING, FLANGED	1	
11	4-51-1001	BRACKET, BELT BASE	2	
12	4-51-1002	BRACKET, BELT CLASP	2	
13	4-51-0009	BRACKET ASSY., SIDELITE STRIKE	2	
13a	4-51-1010	BRACKET, SIDELITE STRIKE	2	
13b	9-73-0080	PANIC SWITCH, MAGNETIC N/O	2	
14	4-51-1045	BRACKET, LOCK STRIKE (standard)	2	
15	9-99-3503	NUT, M6 X 0.5	2	
16	9-51-0006	BOLT, HAMMER HEAD, (electric lock)	2	
17	4-51-0003	CARRIER ASSY., LOWER BELT	1	
18a	4-51-0103	LOCK, ELECTRIC (Fail Safe) Kits see page 13,14	1	
18b	4-51-0104	LOCK, ELECTRIC (Fail Secure) Kits see page 13,14	1	
19	4-51-0004	CARRIER ASSY., UPPER BELT	1	
20	4-51-0006	IDLER PULLEY ASSY.	1	
20a	9-51-0004	PULLEY, IDLER	1	
20b	4-51-1009	BRACKET, IDLER PULLEY	1	
21	4-51-0010	PLATE ASSY., TERMINAL BLOCK	1	
22	4-51-1004	BRACKET, CONDUIT ANCHOR	1	
23	4-51-0012	CARRIER ASSY., SLAVE	2	
23a	4-51-0005	ROLLER ASSY., CARRIER	2	
23b	4-51-0021	ROLLER ASSY., ANTI-RISE	1	
23c	9-99-1813	SCREW, M6X16, HEX, SER.FLANGED HD.	1	
24	4-51-0020	ASSY.,DOOR STOP	2	
25	4-51-0008	BRACKET ASSY.,UP. SIDELITE PVT. - RH	1	
26	5-51-4001	HEADER, SERIES 5100 SLIDER CL-DB	1	
27	5-51-4004	ROLLER TRACK, SERIES 5100 SLIDER	1	
28	9-51-0001	DAMPER, ROLLER TRACK	1	
29	4-51-1056	BRACKET, HEADER MOUNTING - RH	1	
30	9-99-3507	NUT PLATE, SQUARE, 1/4-20 (1Hole)	17 typ.	
31	81-0017-2658	SCREW, 1/4-20X3/8"Allen BH Flanged	17 typ.	
32	9-09-0012	BELT, TIMING, 5100	1	

NOTE: For Safety Beam Info, refer to page 21, Switches & Accessories

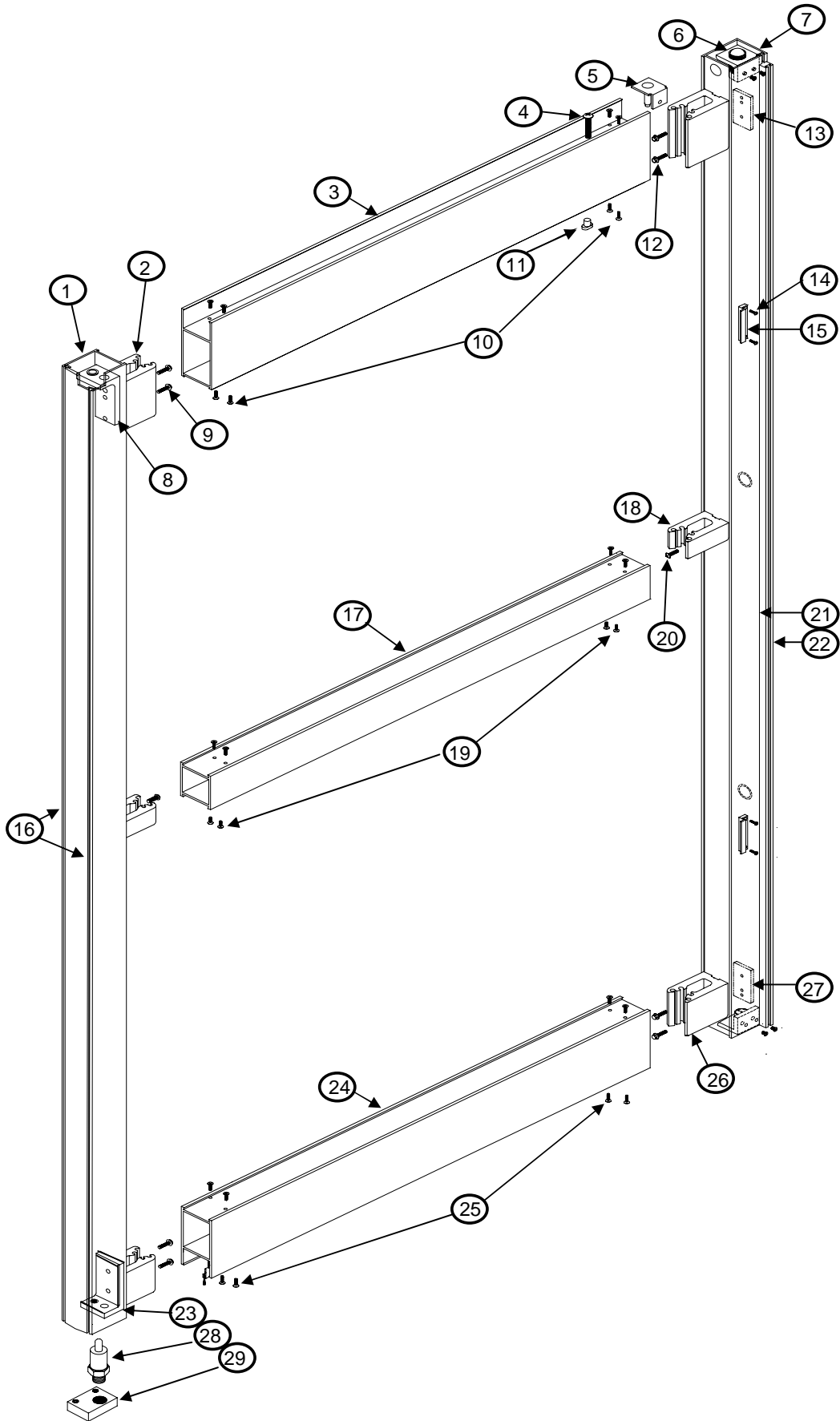




SERIES 5100 SLIDING DOOR "SX" PANEL

8-07

ITEM	PART NUMBER	DESCRIPTION	QTY. REQ'D.	LIST PRICE	ITEM	PART NUMBER	DESCRIPTION	QTY. REQ'D.	LIST PRICE
1	4-51-1049	END CAP, DOOR CATCH	2		26	4-11-4095	INTERLOCK, CL-DB	2	
2	81-0011-2670	SCREW, 1/4-20 X 1" FHS	3		27	9-99-2596	BLOCK, GLASS JACKING	1	
3	81-0718-3666	BOLT, 1/4-20X3/4"HHS GRADE 5 W/NYLON PATCH	2		28	81-4411-0516	SCREW 10-24X3/4" PFH, TYPE "F"	8	
4	5-51-4006	DOOR CATCH CL - DB	1		29	81-0017-3664	BOLT, 1/4-20X5/8" HWH GR.8	4	
5	81-0011-2658	SCREW, 1/4-20x3/8" FHS	2		30	4-51-9004	COVER, DOOR CATCH, plastic	1	
6	9-99-2594	SEAL, FOAM RUBBER, 2" LENGTH	1		31	5-11-4022	STILE, FIXED, CL-DB	1.	
7	9-99-7318	WEATHERPILE, MOHAIR, BLACK	2		32	5-11-4021	STILE, TANDEM CL-DB	1	
8	4-51-1038	HOUSING, DOOR CATCH ASSY.	1		33	4-11-4096	SHEAR BLOCK "SB1"	2	
9	4-51-1039	INTERLOCK, LH, DOOR CATCH (RH 4-51-1040)	1		34	81-3514-0664	SCREW #14 X 5/8" PPH TYPE "B"	2	
10	9-99-7316	WEATHERPILE, MOHAIR, BLACK	2		35	81-4411-0512	SCREW 10-24X1/2" PFH, TYPE "F"	4	
11	4-51-0001	WELDMENT, TORQUE BAR	1		36	5-11-4031	MUNTIN, CL-DB	1	
12	4-51-1003	BRACKET, TORQUE TUBE SUPPORT	1		37	9-99-0064	KEY CYLINDER, CL-DB (pair)	1	
13	9-99-7358	WEATHERPILE, CHANNEL, BLACK	1		38	9-99-0069	CYLINDER, THUMBTURN, CL-DB	1	
14	6-11-9003	CHANNEL, WEATHERPILE	1		39	9-99-0071	DEADLOCK, HOOKBOLT	1	
15	4-70-4104	PIVOT, TORQUE TUBE BOTTOM W/5/16X1" FH SCREW	1		40	81-4411-0516	SCREW, 10-24X3/4" PFH TYPE "F"	8	
16	4-11-1082	BACKER PLATE, "BP1", TOP	2		41	5-11-4033	3 1/2" BOTTOM RAIL CL-DB	1	
17	4-11-4097	SHEAR BLOCK -"SB2", TOP	2		42	81-0074-0558	SCREW, 10-32X3/8" PPH, CL	4	
18	5-51-4009	RAIL, TOP, 3", CL - DB	1		42a	81-0014-0558	SCREW, 10-32X3/8" PPH, SS BL	4	
19	81-0014-0680	SCREW, GLASS ADJUST 1/4-20X2" PPH	1		43	4-11-0469	PIN GUIDE ASSY. RH&LH	1	
20	4-70-0582	ROLLER CATCH	1		44	4-11-1082	BACKER PLATE "BP1" BOTTOM	2	
21	4-51-1042	PLATE, INTERLOCK ASSY.	1		45	4-11-4097	SHEAR BLOCK "SB2" BOTTOM	2	
22	4-51-1041	BRACKET, INTERLOCK ASSY.	1		46	81-0017-3664	BOLT 1/4-20X5/8" HWH GR.8	4	
23	9-99-7316	WEATHERPILE, MOHAIR, BLACK	2		47	9-99-7355	SWEEPSTRIP W/BRUSH(not shown)	1	
24	81-0016-2658	SCREW, 1/4-20X3/8" BSCS-SS	2						
25	81-0014-2670	SCREW, 1/4-20 X 1" BSCS-SS	2		~	5-11-4040	SASH, 1/4" SQUARE CL-DB	~	
					~	5-11-4039	GUTTER, 1/4" SQUARE CL-DB	~	
					~	5-11-4042	SASH, 1" SQUARE CL-DB	~	
					~	5-11-4041	GUTTER, 1" SQUARE CL-DB	~	
					~	6-11-9011	VINYL, GLAZING BULB	~	



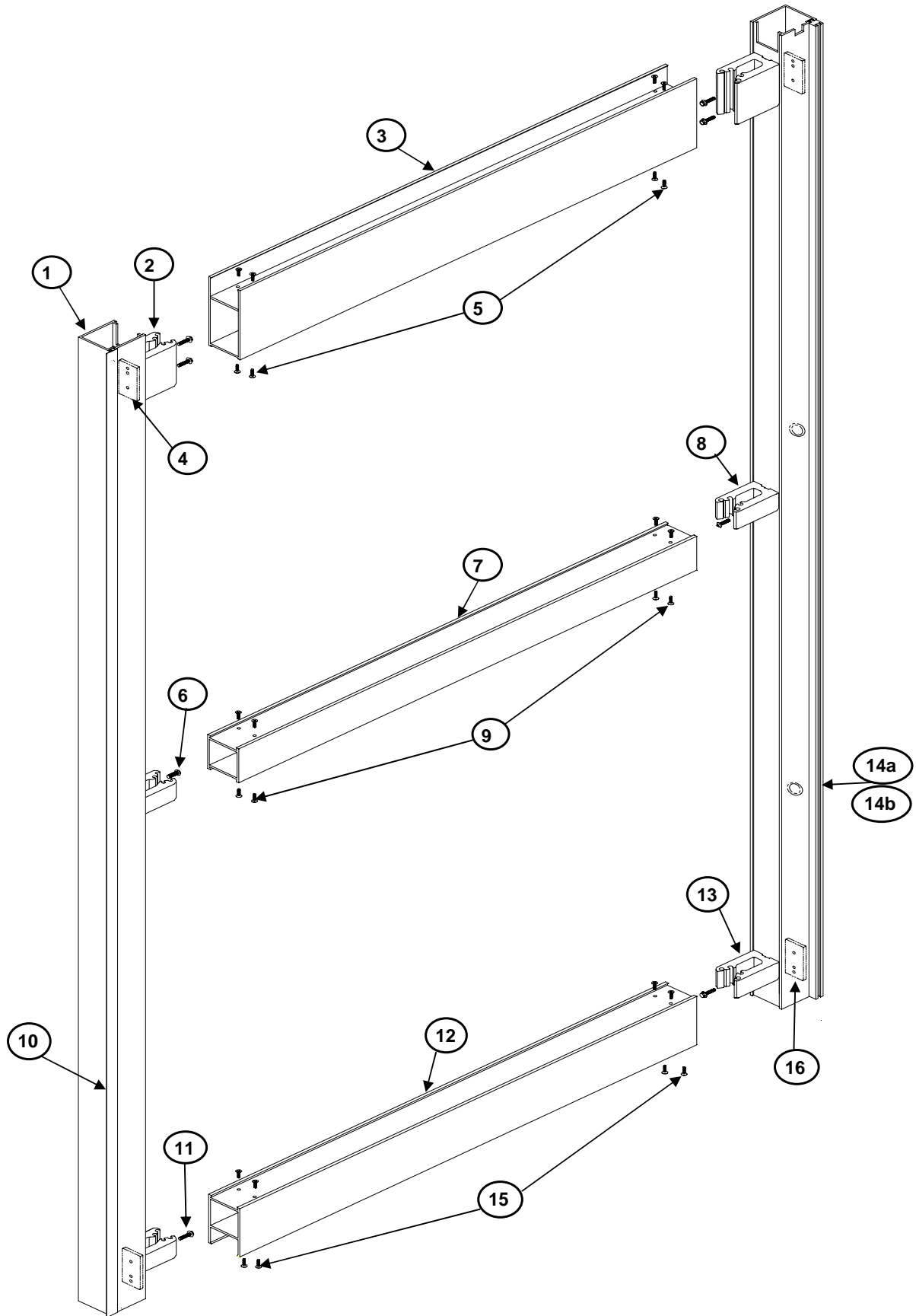


SERIES 5100 SWING OUT SIDELITE "SO" PANEL

8-07

ITEM	PART NUMBER	DESCRIPTION	QTY. REQ'D	LIST PRICE
1	5-11-4021	STILE, TANDEM CL-DB	1	
2	4-11-4098	SHEAR BLOCK, "SB3", TOP	2	
3	5-11-4034	RAIL, UPPER CL-DB	1	
4	81-0014-0680	1/4-20 X 2" PPH GLASS ADJ. SCREW	1	
5	4-11-4093	BRACKET, PANIC SWITCH MAGNET	1	
6	4-70-0672	ROLLER CATCH ASSY.(TOP & BOTTOM) INCLUDES 4-70-0582 BALL DETENT	2	
7	5-11-4022	STILE, FIXED CL-DB (NARROW)	1	
8	4-11-1086	PIVOT ANGLE "PA1-R" (SILVER-TOP) with 9-99-0232 BEARING	1	
9	81-0017-3666	BOLT,1/4-20 X 3/4" HWH GR.8 (TOP & BOTTOM)	4	
10	81-4411-0512	SCREW,10-24 x 1/2" PFH	8	
11	9-99-2596	BLOCK, GLASS JACKING	1	
12	81-0017-3664	BOLT,1/4-20 X 5/8" HWH GR.8 (TOP & BOTTOM)	4	
13	4-11-1082	BACKER PLATE "BP1"	1	
14	81-3514-0512	SCREW,10-24 X 3/4" PFH Type F	4	
15	4-11-4095	INTERLOCK CL-DB (TYP.)	2	
16	9-99-7316	WEATHERPILE CL-DB	~	
17	5-11-4031	MUNTIN BAR (1 1/2") CL-DB	1	
18	4-11-4096	SHEAR BLOCK "SB1"	2	
19	81-4411-0512	SCREW,10-24 X 3/4" PFH Type F	8	
20	81-3514-0664	SCREW,#14 X 5/8" PPH TYPE "B"	2	
21	6-11-9003	CHANNEL, WEATHERPILE	1	
22	9-99-7316	WEATHERPILE CL-DB	~	
23	4-11-1085	PIVOT ANGLE "PA2-R" (GOLD-BOTTOM) with 9-99-0232 BEARING	1	
24	5-11-4033	RAIL, BOTTOM (3 1/2") CL-DB	1	
25	81-4411-0516	SCREW,10-24 X 3/4" PFH Type F	8	
26	4-11-4097	SHEAR BLOCK "SB2"	2	
27	4-11-1082	BACKER PLATE "BP1"	2	
28	4-11-1031	PIN, SIDELITE PIVOT, BOTTOM	1	
29	4-51-4008	BLOCK, SIDELITE PIVOT, BOTTOM	1	
~	5-11-4040	SASH 1/4" SQUARE CL-DB	~	
~	5-11-4039	GUTTER 1/4" SQUARE CL-DB	~	
~	5-11-4042	SASH, 1" SQUARE CL-DB	~	
~	5-11-4041	GUTTER 1" SQUARE CL-DB	~	
~	6-11-9011	VINYL, GLAZING BULB	~	

NOTE: For Safety Beam Info, refer to Page 21, Switches & Accessories





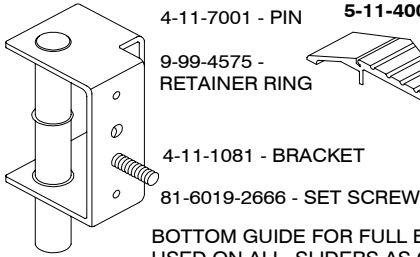
SERIES 5100 FIXED SIDELITE "O" PANEL

8-07

ITEM	PART NUMBER	DESCRIPTION	QTY. REQ'D	LIST PRICE
1	5-11-4022	STILE, FIXED CL - DB (narrow)	2	
2	4-11-4098	SHEAR BLOCK "SB3" TOP	2	
3	5-11-4034	UPPER RAIL CL -DB	1	
4	4-11-1082	BACKER PLATE "BP1"	2	
5	81-4411-0512	SCREW, 10-24-1/2" PFH Type F	4	
6	81-3514-0664	SCREW, #14 X 5/8" PPH Type B	2	
7	5-11-4031	MUNTIN CL - DB	1	
8	4-11-4096	SHEAR BLOCK "SB1"	2	
9	81-4411-0512	SCREW, 10-24X1/2"PFH Type F	8	
10	6-11-9005	VINYL, SIDELITE SEAL	1	
11	81-0017-3664	BOLT, 1/4-20X5/8" HWH	8	
12	5-11-4032	2 1/2" BOTTOM RAIL CL-DB	1	
13	4-11-4096	SHEAR BLOCK "SB1"	2	
14a	6-11-9003	CHANNEL, WEATHERPILE	1	
14b	9-99-7316	WEATHERPILE	1	
15	81-4411-0516	SCREW, 10-24X3/4 " PFH Type F	8	
16	4-11-1082	BACKER PLATE "BP1"	2	
~	5-11-4040	SASH, 1/4" SQUARE CL-DB	~	
~	5-11-4039	GUTTER, 1/4"SQUARE CL-DB	~	
~	5-11-4042	SASH, 1" SQUARE CL-DB	~	
~	5-11-4041	GUTTER, 1" SQUARE CL-DB	~	
~	6-11-9011	VINYL, GLAZING BULB	~	
NOTE: For Safety Beam Info, refer to Page 21 , Switches & Accessories				

BOTTOM GUIDE SYSTEMS

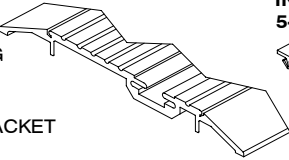
ITEM #1
PIN GUIDE ASSEMBLY
4-11-0469 RH & LH



- 4-11-7001 - PIN
- 9-99-4575 - RETAINER RING
- 4-11-1081 - BRACKET
- 81-6019-2666 - SET SCREW

BOTTOM GUIDE FOR FULL BREAK OUT SLIDER
USED ON ALL SLIDERS AS OF 1-1-03
(CALL FACTORY FOR OLDER UNITS)
**NOTE: ALSO USED ON THE 5100 TELESCOPE
FULL BREAKOUT BOTTOM GUIDE SYSTEM**

ITEM #2
RAMPED PIN GUIDE TRACK
5-11-4008



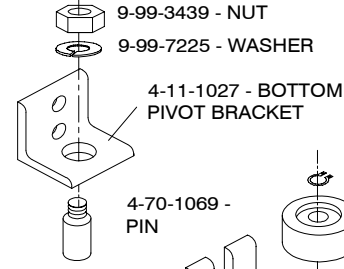
ITEM #3
INSERT, PIN GUIDE
5-51-4015



ITEM #4
BOTTOM GUIDE
TRACK CAP
9-70-0077



ITEM #5
REVERSE BREAKOUT BOTTOM GUIDE 4-11-0459



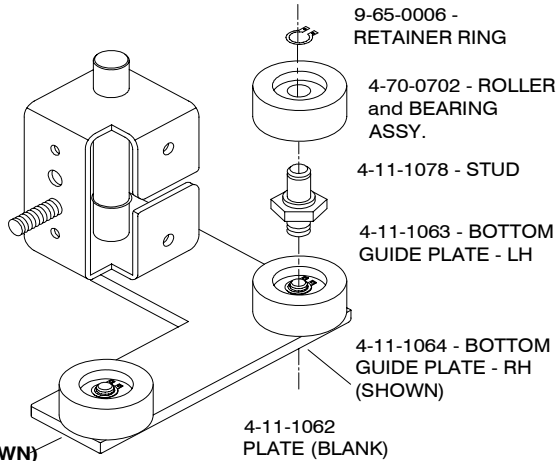
- 9-99-3439 - NUT
- 9-99-7225 - WASHER
- 4-11-1027 - BOTTOM PIVOT BRACKET
- 4-70-1069 - PIN
- 4-19-4062 - LH
- 4-19-4063 - RH

- 9-65-0006 - RETAINER RING
- 4-70-0702 - ROLLER and BEARING ASSY.
- 4-11-1078 - STUD

ITEM #6&7
TRACKLESS ICU
BOTTOM GUIDE
4-19-0026 LH (SHOWN)
4-19-0027 RH

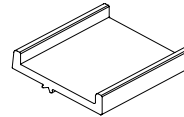
**NOTE: ALSO USED ON THE 5100 TELESCOPE
FIXED PANEL BOTTOM GUIDE SYSTEM**

- 4-11-1081 - BRACKET
- 4-11-7002 - PIN
- 9-99-4575 - RETAINER RING
- 81-6019-2666 - SET SCREW
- 9-99-5702 - SPRING, FINGER
- 9-99-4622 - RETAINER RING

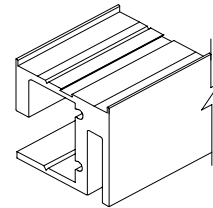


**FIXED PANEL
BOTTOM GUIDE
ASSEMBLY**
4-11-0470 - LH
4-11-0471 - RH (SHOWN)
ITEM #8&9

FIXED PANEL BOTTOM GUIDE USED FROM 1-1-03 WILL RETROFIT TO OLD STYLE
DOOR EXTRUSION AND WORK WITH CURRENT GUIDE RAIL EXTRUSION.



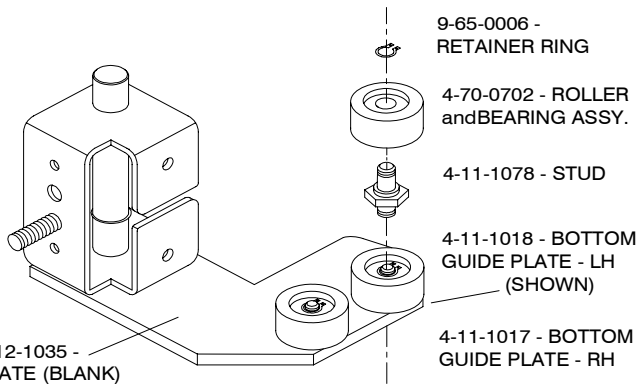
**G-RAIL INSERT
5-51-4014
ITEM #11**



**BOTTOM GUIDE RAIL
5-11-4018 (PER FOOT)
ITEM #10**

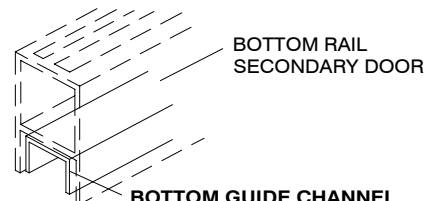
5100 TELESCOPE BOTTOM GUIDE SYSTEMS

- 4-11-1081 - BRACKET
- 4-11-7002 - PIN
- 9-99-4575 - RETAINER RING
- 81-6019-2666 - SET SCREW
- 9-99-5702 - SPRING, FINGER
- 9-99-4622 - RETAINER RING

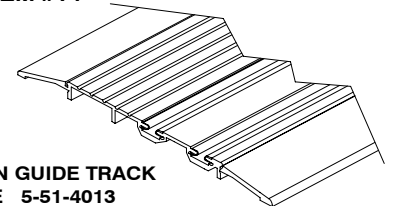


**FIXED PANEL BOTTOM GUIDE ASSEMBLY
PRIMARY TO SECONDARY DOOR**
4-12-0470 LH (SHOWN)
4-12-0471 RH
ITEM #12&13

- 9-65-0006 - RETAINER RING
- 4-70-0702 - ROLLER and BEARING ASSY.
- 4-11-1078 - STUD
- 4-11-1018 - BOTTOM GUIDE PLATE - LH (SHOWN)
- 4-11-1017 - BOTTOM GUIDE PLATE - RH



**BOTTOM RAIL
SECONDARY DOOR**
**BOTTOM GUIDE CHANNEL
5-19-4003 (PER FOOT)
ITEM #14**



**RAMPED PIN GUIDE TRACK
TELESCOPE 5-51-4013
ITEM #15**



SERIES 5100 BOTTOM GUIDE SYSTEMS

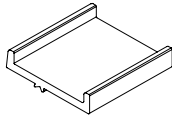
8-07

ITEM	PART NUMBER	DESCRIPTION	QTY.	LIST PRICE
1	4-11-0469	PIN GUIDE ASSY. RH & LH	1	
2	5-11-4008-MF	RAMPED PIN GUIDE TRACK	1	
3	5-51-4015-MF	INSERT, PIN GUIDE	1	
4	9-70-0077	BOTTOM GUIDE TRACK CAP	1	
5	4-11-0459	REVERSE BREAKOUT PIN GUIDE ASSY.	1	
6	4-19-0026	TRACKLESS ICU BOTTOM GUIDE ASSY.-LH	1	
7	4-19-0027	TRACKLESS ICU BOTTOM GUIDE ASSY.-RH	1	
8	4-11-0470	FIXED PANEL BOTTOM GUIDE ASSY.-LH	1	
9	4-11-0471	FIXED PANEL BOTTOM GUIDE ASSY.-RH	1	
10	5-11-4018	BOTTOM GUIDE RAIL CL-DB	1	
11	5-51-4014-MF	G-RAIL INSERT	1	
5100 TELESCOPE BOTTOM GUIDE SYSTEMS				
12	4-12-0470	FIXED PANEL BOTTOM GUIDE ASSY.- LH TELESCOPE PRIMARY TO SECONDARY	1	
13	4-12-0471	FIXED PANEL BOTTOM GUIDE ASSY.- RH TELESCOPE PRIMARY TO SECONDARY	1	
14	5-19-4003-MF	BOTTOM GUIDE CHANNEL TELESCOPE SECONDARY DOOR	1	
15	5-51-4013-MF	RAMPED PIN GUIDE TRACK - TELESCOPE	1	
PARTS				
1	4-70-0702	ROLLER & BEARING ASSY.	2	
2	4-11-1078	STUD	2	
3	9-65-0006	RETAINER RING	2	
4	4-70-1069	PIN	1	
5	9-99-7225	WASHER	1	
6	9-99-3439	NUT	1	

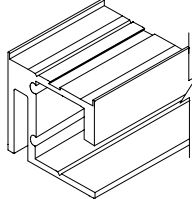


SERIES 5200 ALL-GLASS BOTTOM GUIDE SYSTEM

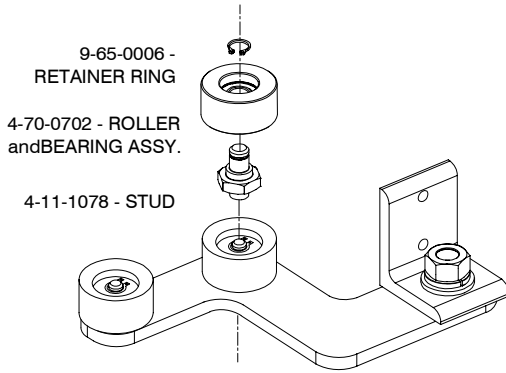
8-07



G-RAIL INSERT
5-51-4014
ITEM #1



BOTTOM GUIDE RAIL
5-11-4018 (PER FOOT)
ITEM #2



ALL-GLASS BOTTOM GUIDE ASSY.
4-52-0010 LH (SHOWN)
4-52-0011 RH
ITEM #3&4

5200 ALL-GLASS WEATHERSTRIP

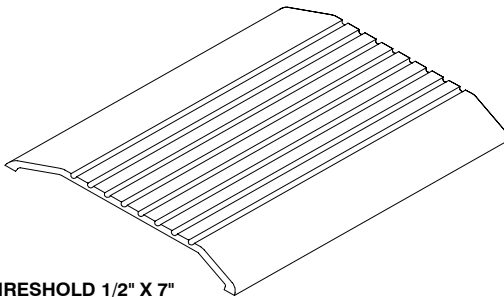


**WEATHER PILE
LEADING EDGE**
9-99-7349
ITEM #1

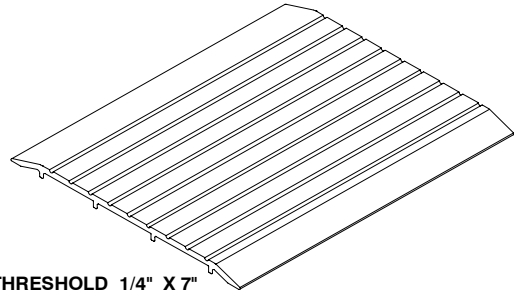


SEAL, FINNED
6-52 9001
ITEM #2

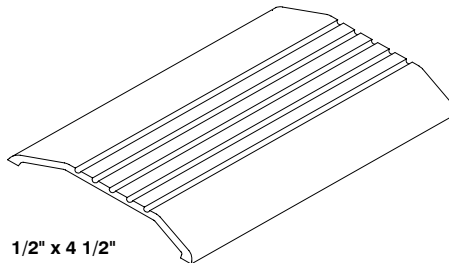
THRESHOLD



THRESHOLD 1/2" X 7"
5-11-4011
ITEM #1



THRESHOLD 1/4" X 7"
5-11-4017
ITEM #2



THRESHOLD 1/2" x 4 1/2"
5-40-4005
ITEM #3

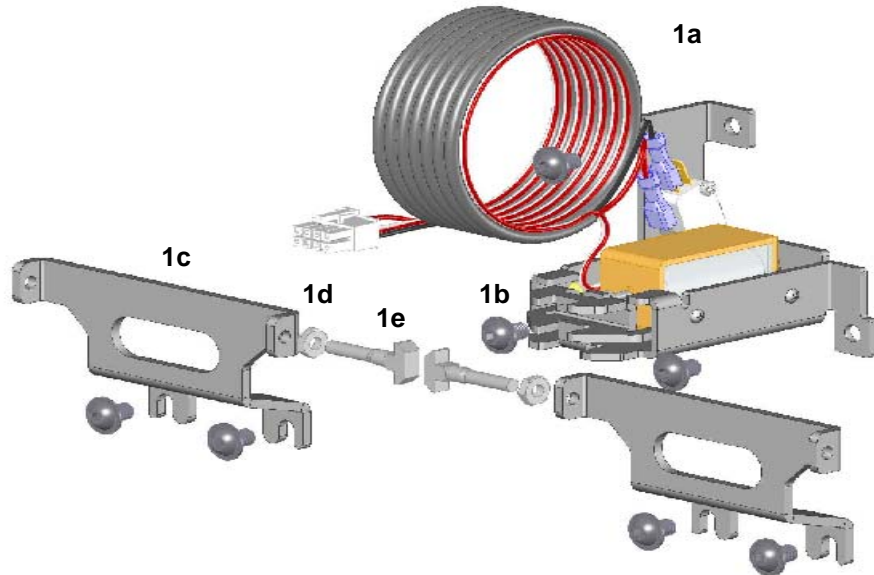


**SERIES 5200 ALL-GLASS
BOTTOM GUIDE SYSTEM**

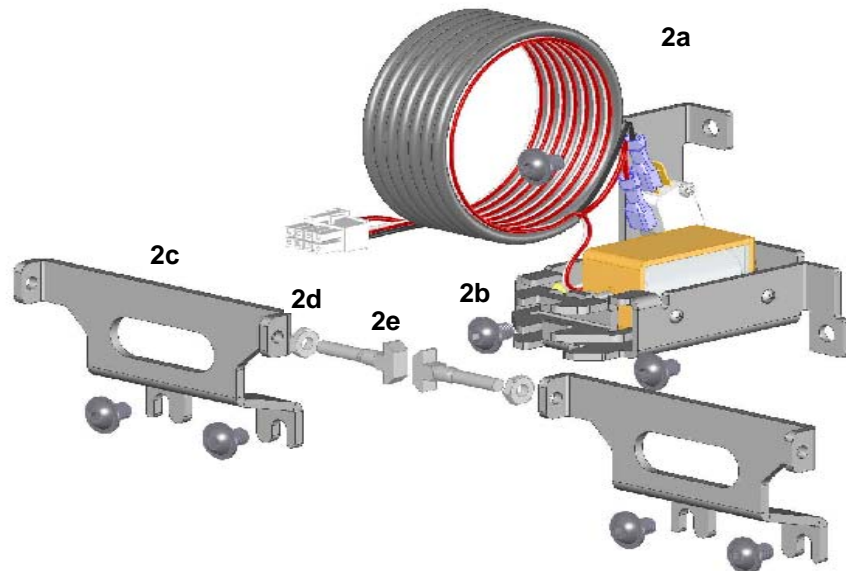
8-07

ITEM	PART NUMBER	DESCRIPTION	QTY.	LIST PRICE
1	5-51-4014	G-RAIL INSERT	2	
2	5-11-4018	BOTTOM GUIDE RAIL CL-DB	1	
3	4-52-0010	ALL-GLASS BOTTOM GUIDE ASSY.-LH	1	
4	4-52-0011	ALL-GLASS BOTTOM GUIDE ASSY.-RH	1	
		ALL-GLASS WEATHERSTRIP		
1	9-99-7349	WEATHERPILE, LEADING EDGE	1	
2	6-52-9001	SEAL, FINNED	1	
		THRESHOLD		
1	5-11-4011	THRESHOLD 1/2" X 7" SADDLE - MF	1	
2	5-11-4017	THRESHOLD 1/4" X 7" SADDLE - MF	1	
3	5-40-4005	THRESHOLD 1/2" X 4 1/2" SADDLE - MF	1	
		PARTS		
1	4-70-0702	ROLLER & BEARING ASSY.	2	
2	4-11-1078	STUD	2	
3	9-65-0006	RETAINER RING	2	
4	4-70-1069	PIN	1	
5	9-99-7225	WASHER	1	
6	9-99-3439	NUT	1	

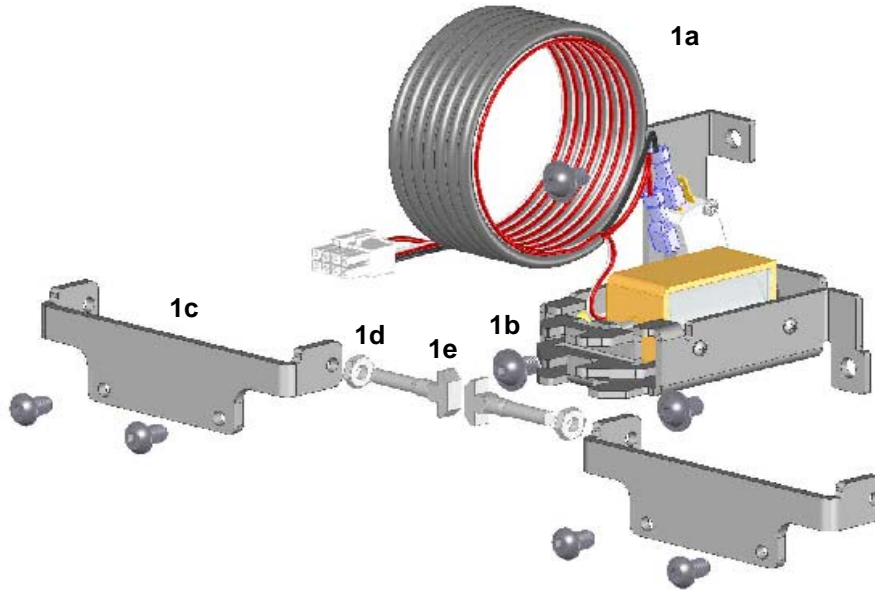
SERIES 5100 ELECTRIC LOCK ASSEMBLY KITS



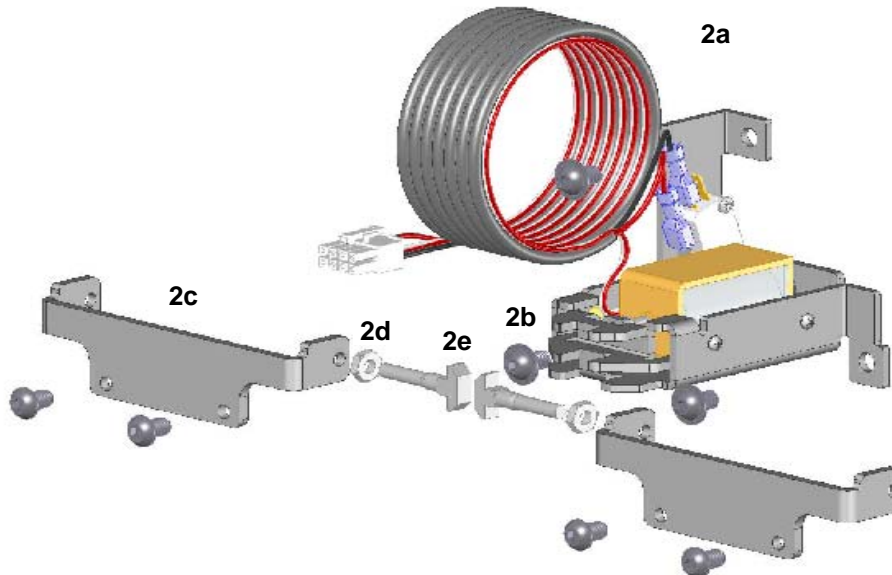
ITEM	PART NUMBER	DESCRIPTION	QTY.	LIST PRICE
1	4-51-0801	KIT, BI-PART, FAIL-SAFE	1	
1a	4-51-0103	LOCK ASSY., ELECTRIC - FAIL SAFE	1	
1b	81-0017-2658	SCREW, 1/4-20X3/8" BFHCS	7	
1c	4-51-1045	BRACKET, LOCK STRIKE (standard)	2	
1d	9-99-3503	NUT, M6X0.5	2	
1e	9-51-0006	BOLT, HAMMERHEAD	2	
1f	9-99-3507	NUT PLATE, 1/4-20 (not shown)	3	



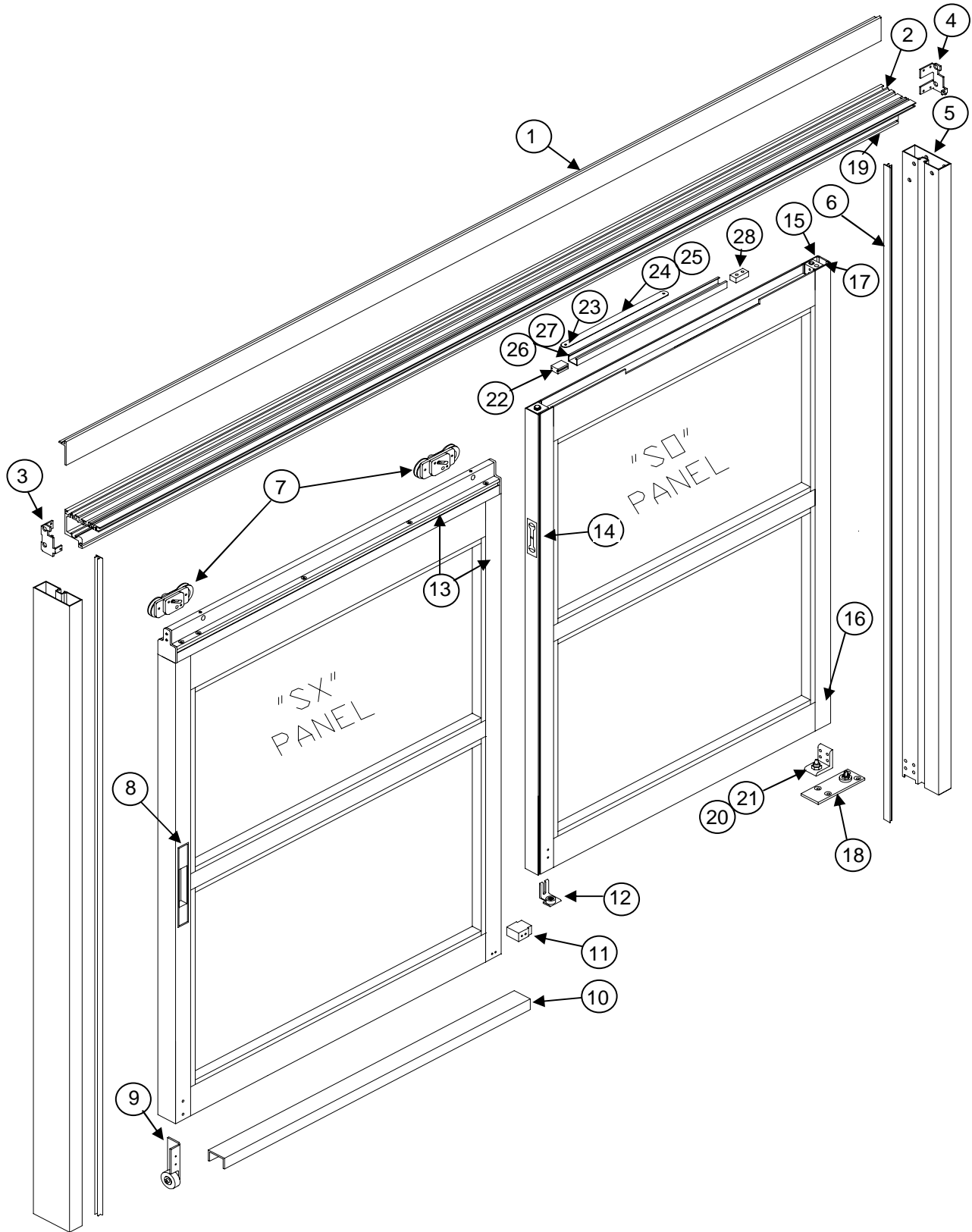
2	4-51-0805	KIT, BI-PART, FAIL SECURE	1	
2a	4-51-0104	LOCK ASSY., ELECTRIC(FAIL SECURE)	1	
2b	81-0017-2658	SCREW, 1/4-20X3/8" BFHCS	7	
2c	4-51-1045	BRACKET, LOCK STRIKE (standard)	2	
2d	9-99-3503	NUT, M6X0.5	2	
2e	9-51-0006	BOLT, HAMMERHEAD	2	
2f	9-99-3507	NUT PLATE, 1/4-20 (not shown)	3	



ITEM	PART NUMBER	DESCRIPTION	QTY.	LIST PRICE
1	4-51-0803	KIT, 6 PANEL TELE., FAIL SAFE	1	
1a	4-51-0103	LOCK ASSY., ELECTRIC - FAIL SAFE	1	
1b	81-0017-2658	SCREW, 1/4-20X3/8" BFHCS	7	
1c	4-51-1046	BRACKET, LOCK STRIKE (telescope)	2	
1d	9-99-3503	NUT, M6X0.5	2	
1e	9-51-0006	BOLT, HAMMERHEAD	2	
1f	9-99-3507	NUT PLATE, 1/4-20 (not shown)	3	



2	4-51-0807	KIT, 6 PANEL TELE., FAIL SECURE	1	
2a	4-51-0104	LOCK ASSY., ELECTRIC(FAIL SECURE)	1	
2b	81-0017-2658	SCREW, 1/4-20X3/8" BFHCS	7	
2c	4-51-1046	BRACKET, LOCK STRIKE (telescope)	2	
2d	9-99-3503	NUT, M6X0.5	2	
2e	9-51-0006	BOLT, HAMMERHEAD	2	
2f	9-99-3507	NUT PLATE, 1/4-20 (not shown)	3	



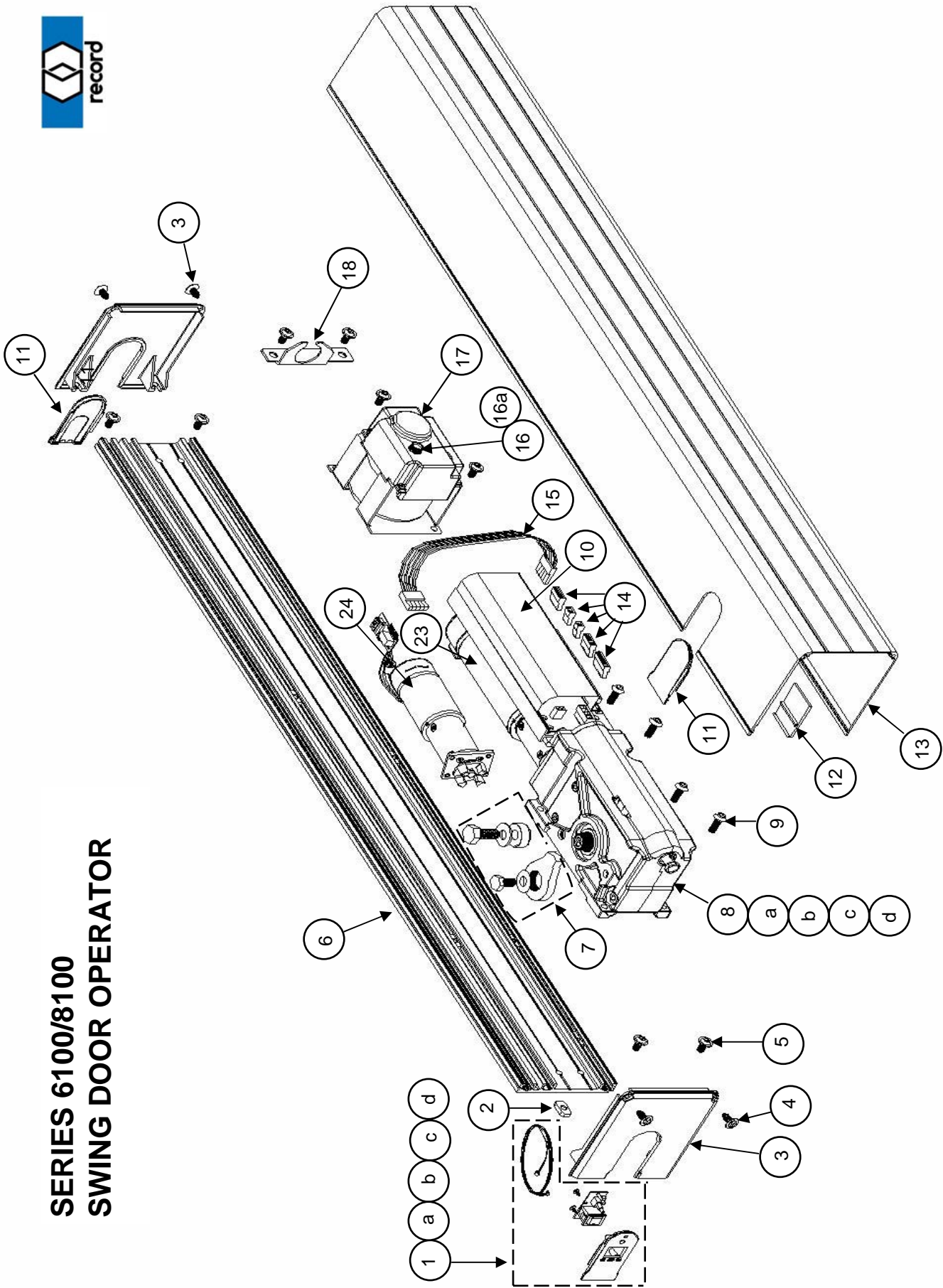


SERIES 5900 TRACKLESS ICU PARTS LIST

8-07

ITEM	PART NUMBER	DESCRIPTION	QTY.	LIST PRICE
1	5-59-4003	COVER, ICU CL-DB	1	
2	5-59-4001	HEADER, ICU CL-DB	1	
3	4-59-1003	BRACKET, HEADER MNTING. - LH	1	
4	4-59-1004	BRACKET, HEADER MNTING. - RH	1	
5	5-60-1418	SIDE JAMB 1 3/4"X4 1/2" CL-DB	2	
6	5-60-1532	JAMB FILLER CL-DB	2	
7	4-51-0012	CARRIER ASSY., SLAVE	2	
8	9-99-2833	DOOR PULL, RECESSED	1	
9	4-79-0100	ICU DOOR WHEEL ASSY.	1	
10	5-19-4003	BOTTOM GUIDE CHANNEL - MF	1	
11	4-19-9001	BLOCK, TRANSFER PIVOT	1	
12	4-19-0026	TRACKLESS BOTTOM GUIDE ASSY.-LH	1	
~~~	4-19-0027	TRACKLESS BOTTOM GUIDE ASSY.-RH	1	
13	4-51-0001	WELDMENT, TORQUE BAR	1	
14	9-99-0073	FLUSHBOLT, MANUAL CL-DB	1	
15	4-11-1086	PIVOT ANGLE, TOP "PA1-L"	1	
16	4-19-1020	PIVOT ANGLE, BOTTOM, TRACKLESS (not shown)	1	
17	9-99-0232	BEARING, FLANGED	2	
18	4-19-0025	TRANSFER PIVOT ASSY. uses 4-19-7001 stud	1	
19	9-58-0008	CLEVIS PIN (not shown)	1	
20	4-60-1091	BRACKET, SIDELITE PIVOT	1	
21	4-11-1031	PIN, SIDELITE PIVOT	1	
22	4-24-9003	SLIDE BLOCK	1	
23	4-20-1090	STUD, SLIDE ARM (not shown)	1	
24	4-19-1016	STOP LINK ARM >40" SLW	1	
25	4-19-1015	STOP LINK ARM <40" SLW	1	
26	4-19-1017	STOP LINK TRACK <40" SLW	1	
27	4-19-1018	STOP LINK TRACK >40" SLW	1	
28	4-19-1019	STOP BLOCK	1	
~~	4-59-0019	TUBE ASSY., ANTI-BREAKOUT- CL-DB includes 4-49-4004 & 4-59-9002 END CAP (not shown)	1	
~~	9-99-2813	DOOR PULL, SURFACE CL-DB	~	
~~	9-99-2809	DOOR PULL, SURFACE CL-DB BACK TO BACK	~	
~~	9-99-2827	DOOR PULL, SURFACE CL-DB OFFSET	~	
~~	9-99-2832	DOOR PULL, SURFACE CL-DB OFFSET, BACK TO BACK	~	

**SERIES 6100/8100  
SWING DOOR OPERATOR**

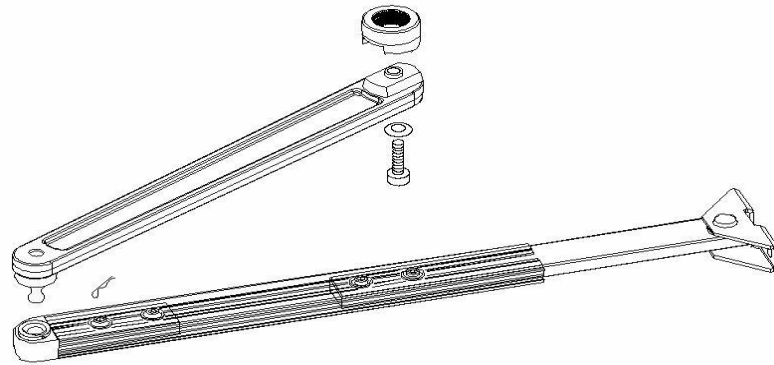




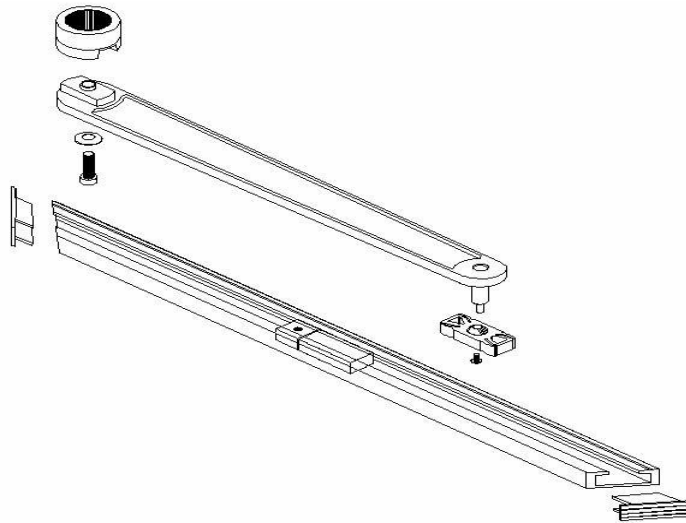
# SERIES 6100/8100 SWING DOOR OPERATOR

8-07

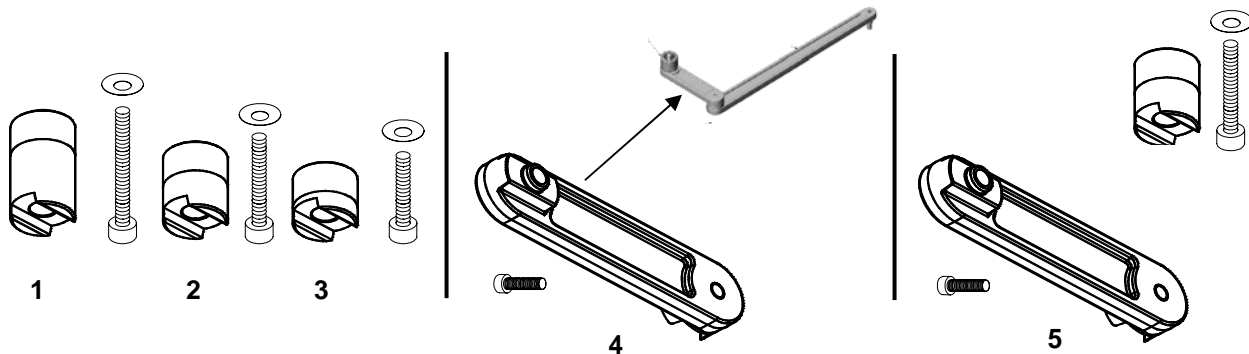
ITEM	PART NUMBER	DESCRIPTION	QTY. REQ'D.	LIST PRICE
1	4-80-0802	<b>KIT, RKR. SWITCH,CABLE,INSERT,&amp; SCREWS</b>	1	
a	6-80-9004	INSERT, COVER (SWITCH)	1	
b	9-99-1323	ROCKER SWITCH ASSY. BDI MODULE	1	
c	9-99-0463	CABLE, ROCKER SWITCH ASSY.	1	
d	81-4814-0106	SCREW, 2-28X5/16" Ph. PH PLASTITE, ZINC	2	
2	9-99-3507	NUT PLATE, SQUARE,1/4-20 (1 hole)	12 typ.	
3	6-80-9001	END CAP, COVER	2	
4	81-3114-0412	SCREW, 8x1/2" Ph. PH SMS BL OXIDE	4	
5	81-0017-2658	SCREW, 1/4-20X3/8" ALLEN BH BL OXIDE	12 typ.	
6	5-80-4001-MF	PLATE, OPERATOR MOUNTING, 6100/8100	1	
7	9-80-0103	<b>MOUNTING SET, HARD STOP ADAPTOR</b>	1	
8a	9-80-0100	<b>8100 OPERATOR, COMPLETE</b> DRIVE MODULE, CONTROL, STOP SET, POWER SUPPLY, ROCKER SWITCH & CABLE	1	
8b	9-80-0101	<b>8100</b> DRIVE MODULE, W/ CONTROL	1	
8c	9-61-0100	<b>6100 OPERATOR, COMPLETE</b> DRIVE MODULE, CONTROL, STOP SET, POWER SUPPLY, ROCKER SWITCH & CABLE	1	
8d	9-61-0101	<b>6100</b> DRIVE MODULE, W/ CONTROL	1	
9	81-0014-2666	SCREW 1/4-20X3/4" ALLEN BH, BL OXIDE	4	
10	9-80-0108	CIRCUIT BOARD, SERIES 6100/8100 OPERATOR	1	
11	6-80-9003	INSERT, PLAIN, COVER & END CAP	2 typ.	
12	6-80-9002	INSERT, SHAFT CUTOUT, COVER	1	
13	5-80-4004	COVER, 6100/8100 CL-DB	1	
14	4-80-0801	<b>KIT, PLUG-IN TERM. STRIPS &amp; JUMPERS</b>	1	
	9-99-6606	J1 CONNECTOR, (CANBUS) 25-28	1	
	9-99-6601	J2 CONNECTOR, (AKA, AKI) 1-7	1	
	9-99-6602	J3 CONNECTOR, (AUX/SIO/SIS) 8-13	1	
	9-99-6603	J4 CONNECTOR, (EMERG. C/O) 14-15	1	
	9-99-6604	J5 CONNECTOR, (ALARM) 16-18	1	
	9-99-6605	J6 CONNECTOR, (VRR/VAK) 19-24	1	
15	9-80-0010	HARNESS, ENCODER	1	
16	9-99-1902	FUSE HOLDER	1	
16a	9-99-1940	FUSE, 5x20, 2 1/2 amp, slow blow	1	
17	9-80-0102	POWER SUPPLY, 6100/8100	1	
18	4-51-1004	BRACKET, CONDUIT ANCHOR	1	
19	9-80-0009	HARNESS, PWR. SUPPLY>CONTROL (not shown)	1	
20	9-99-0783	SHORTING BRIDGE (jumper),TERM. BLOCKS	3 typ.	
21	9-99-0784	SHORTING BLOCK for 0.1C/L POSTS	2 typ.	
22	4-80-0803	<b>KIT, HEADER ACCESSORY PKG.</b> endcaps,inserts,screws,nut plates, decal	1	
23	9-80-0109	MOTORDRIVE ASSY., <b>8100</b>	1	
24	9-61-0109	MOTORDRIVE ASSY., <b>6100</b>	1	
~~	4-80-4016	COVER ONLY, MACHINING, SINGLE CL-DB	1	
~~	4-80-4018	COVER ONLY, MACHINING, DUAL CL-DB	1	
~~	4-80-0013	COVER & BACKPLATE ASSY.,SINGLE CL-DB (complete)	1	
~~	4-80-0018	COVER & BACKPLATE ASSY.,DUAL CL-DB (complete)	1	



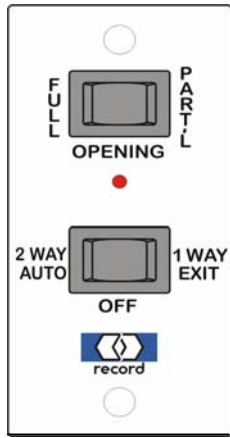
ITEM	PART NUMBER	DESCRIPTION	QTY.	LIST PRICE
1	9-80-0105-CL	STANDARD ARM ASSY. w/20mm Adaptor	1	



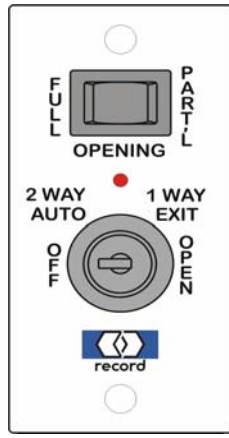
ITEM	PART NUMBER	DESCRIPTION	QTY.	LIST PRICE
2	9-80-0104-CL	SLIDE TRACK ARM ASSY. w/20mm Adaptor	1	



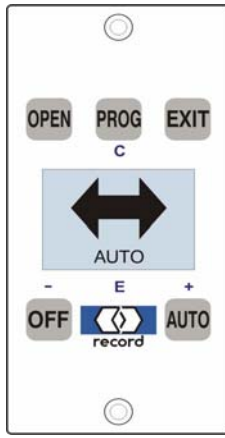
1	9-80-0011-CL	ARM ADAPTOR 80MM (3")	1	
2	9-80-0007-CL	ARM ADAPTOR 50MM (1 3/4")	1	
3	9-80-0006-CL	ARM ADAPTOR 20MM (1/2")	1	
4	9-80-0107-CL	OFFSET ARM ADAPTOR	1	
5	4-80-0804-CL	DOUBLE EGRESS ADAPTOR KIT	1	



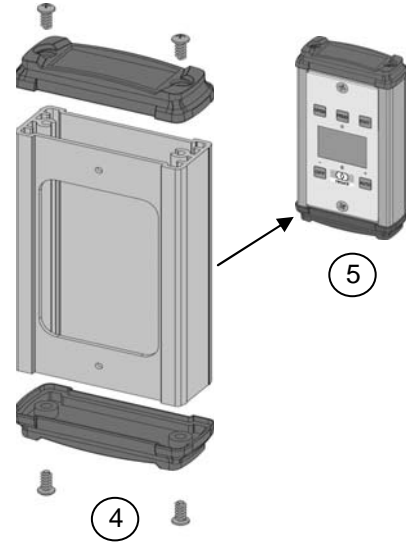
1



2



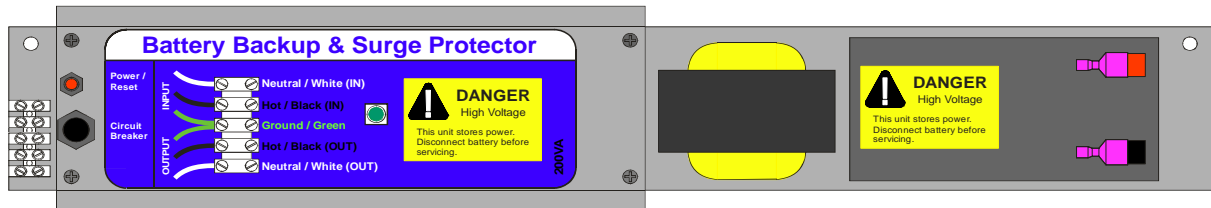
3 3a



4

5

ITEM	PART NUMBER	DESCRIPTION	QTY.	LIST PRICE
1	4-51-0105	CONTROL MODULE, DUAL ROCKER	1	
2	4-51-0106	CONTROL MODULE, ROCKER/KEYSWITCH	1	
3	9-99-1321	CONTROL MODULE, DISPLAY no cable - no plug	1	
3a	4-51-0107	CONTROL MODULE, DISPLAY w/cable - w/plug	1	
4	9-15-0001	ENCLOSURE, CONTROL MODULE	1	
5	4-80-0800	CONTROL MODULE, DISPLAY with ENCLOSURE w//cable - no plug		



1 20 1/2"W x 3 3/4"H x 2 3/4"D

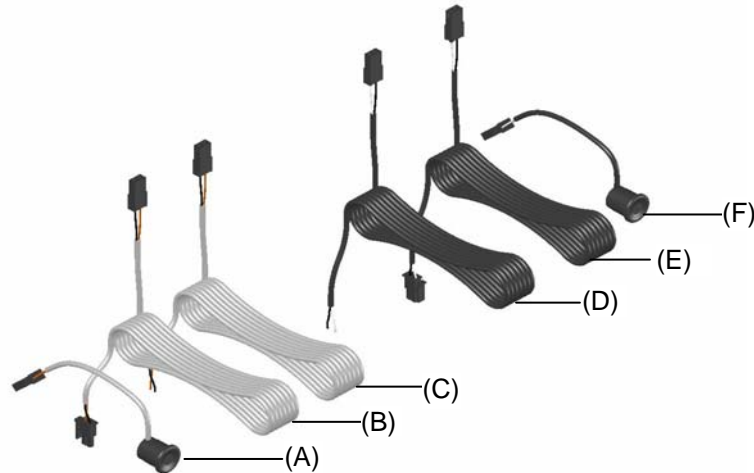


2 4 1/2"W x 3 1/4"H x 1 3/8"D

1	9-99-5570	Uninterruptable Power Supply (UPS)	1	
2	9-51-0010	BATTERY PACK, ( NICAD )	1	



ITEM	PART NUMBER	DESCRIPTION	QTY.	LIST PRICE
1	9-99-1317	FPC902 - FLASHPROGRAMMER	1	
2	9-59-0001	AC ADAPTOR BATTERY CHARGER, FPC902	1	



1	4-51-0808	SAFETY BEAM SET, 5100 1ea.-9-61-0041 2ea.-9-61-0042	1	
2	9-61-0041	KIT,SAFETY BEAM WIRE ASSY., HEADER 1ea.(C) ; 1ea.(D)	1	
3	9-61-0042	KIT, BEAM HEAD w/WIRE ASSY. 1-EMITTER - (F) & HARNESS - (E) 1-RECEIVER - (A) & HARNESS - (B)	1	
4	9-61-0043	KIT, WIRE ASSY.,BEAM HEADS 2ea.(B) ; 2ea.(E)	1	
5	9-61-0045	EMITTER, Black Wire -(F)	1	
6	9-61-0046	RECEIVER, Gray Wire -(A)	1	